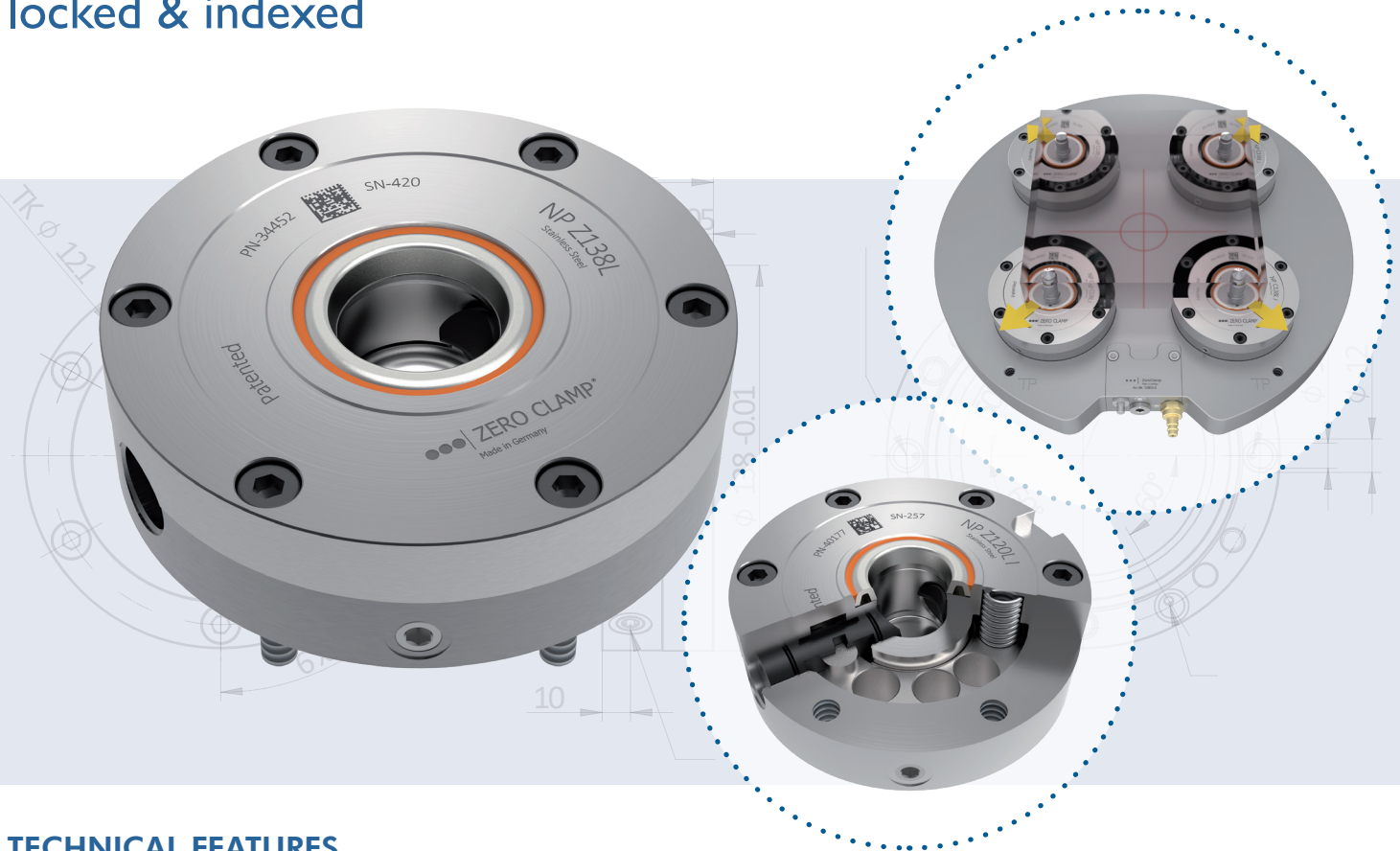




ZERO CLAMP®
Experience precision

FOR INCREASING REQUIREMENTS

Zero Point Clamping Unit Z/C 138 & Z 120 locked & indexed



TECHNICAL FEATURES

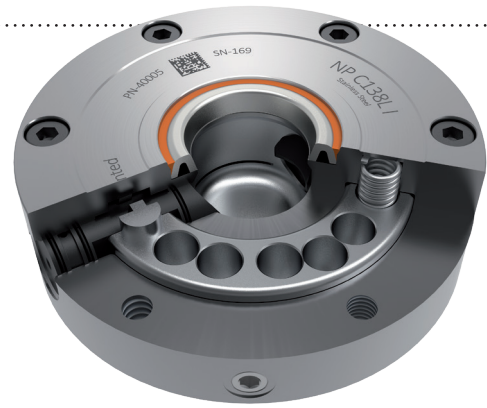
- ✓ The Zero Point center cone technology patented by ZeroClamp® offers the highest accuracy with 2.54 µm (0.0001") repeatability
- ✓ One piece sealed heat treated stainless steel construction
- ✓ The design of ZeroClamp® does not require type A, B & C clamping pins to be placed in specific patterns to compensate for thermal growth and misalignments
- ✓ The Z 138L model uses the ZeroClamp® standard clamping stud, minimizing inventory
- ✓ The design of ZeroClamp® has 30% more piston stroke and force for the clamping of the slides with 14 springs and provides high pull in force throughout the stroke
- ✓ 5 air ports available on the back as standard - open, turbo function, blowout function and dynamic pressure monitoring of open and clamped for each clamping slide, in addition to 2 side air ports for open and turbo
- ✓ German precision and quality with design patented worldwide
- ✓ Industry 4.0 product

Thermal Symmetry for absolute Zero Point is guaranteed with the center cone technology patented by ZeroClamp®. Using the same principle as an HSK tool taper interface with zero radial play, together with the axial position relative to the axial face. Direct replacement for competitors' clamping modules.

Operating Principle

A piston recessed in the slide area is equipped with drivers arranged at an angle of 15° which engage in the slides.

During a stroke movement of the piston, the clamping slides are moved radially and lock the clamping bolt via the spring force of the 14 clamping springs.

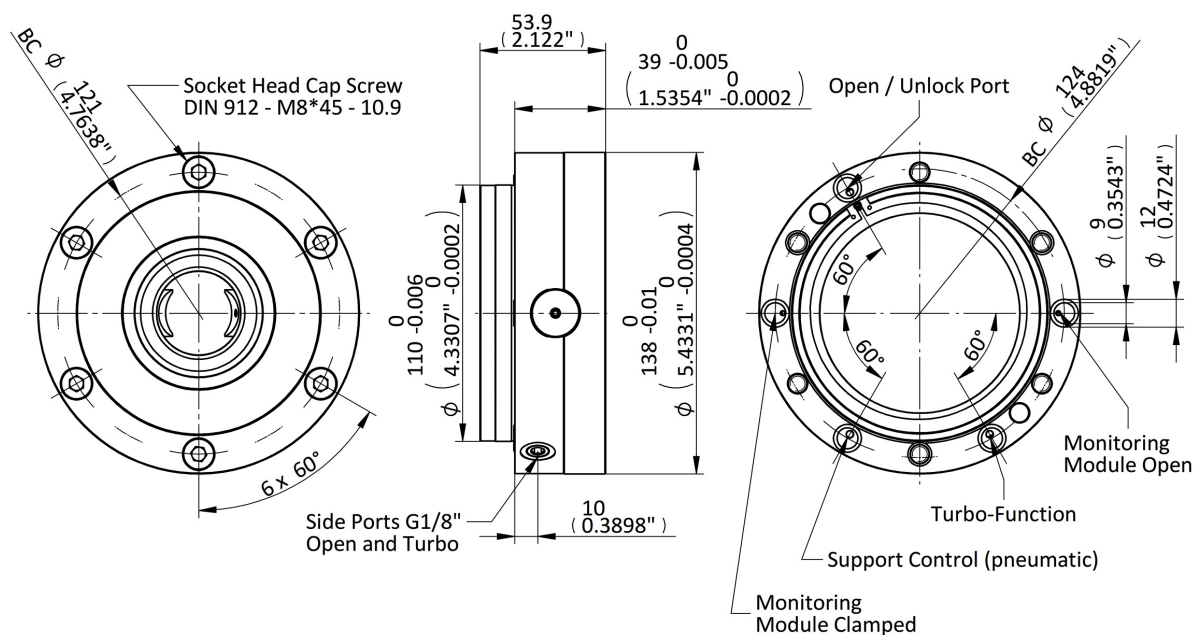


C 138L, P/N 40005

Zero Point Clamping Unit C 138L / Z 138L

P/N 34465 | P/N 34452

Dimensions Sheet



C 138L
P/N 34465



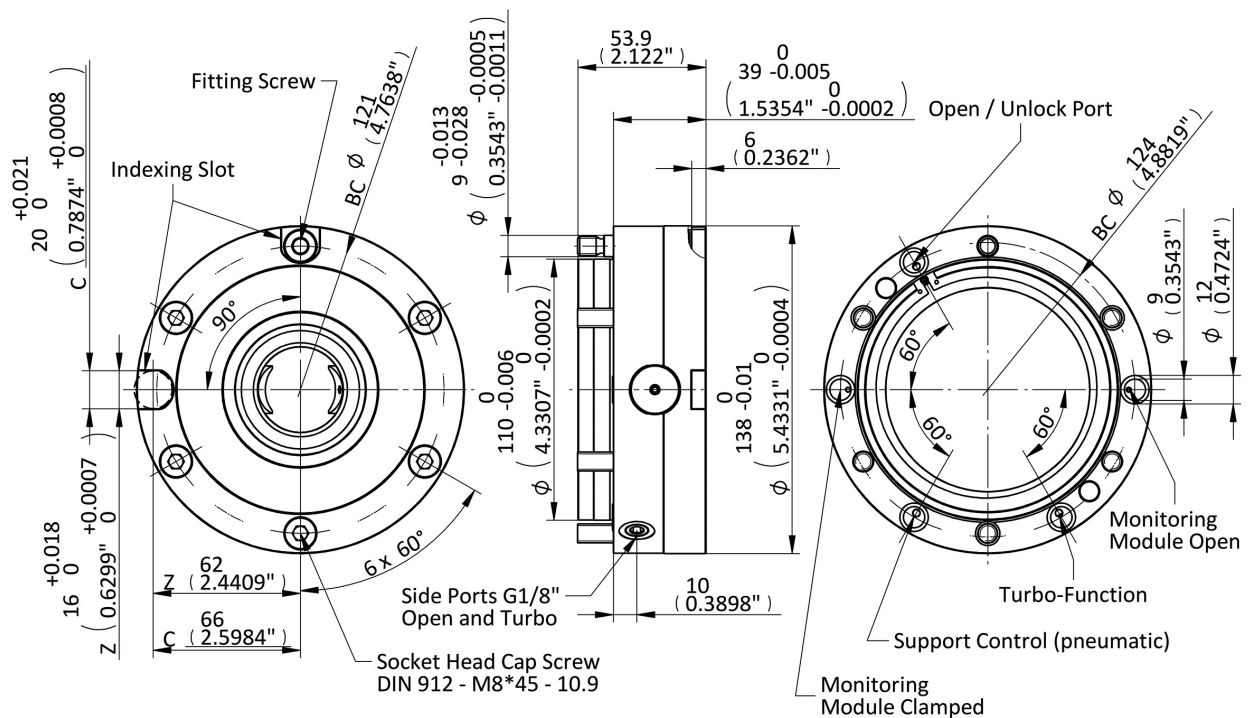
Z 138L
P/N 34452



Zero Point Clamping Unit C 138LI / Z 138LI

P/N 40005 | P/N 40179

Dimensions Sheet



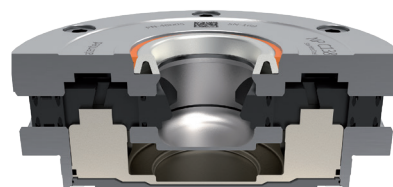
C 138LI
P/N 40005



C 138LI,
partial section



Z 138LI
P/N 40179

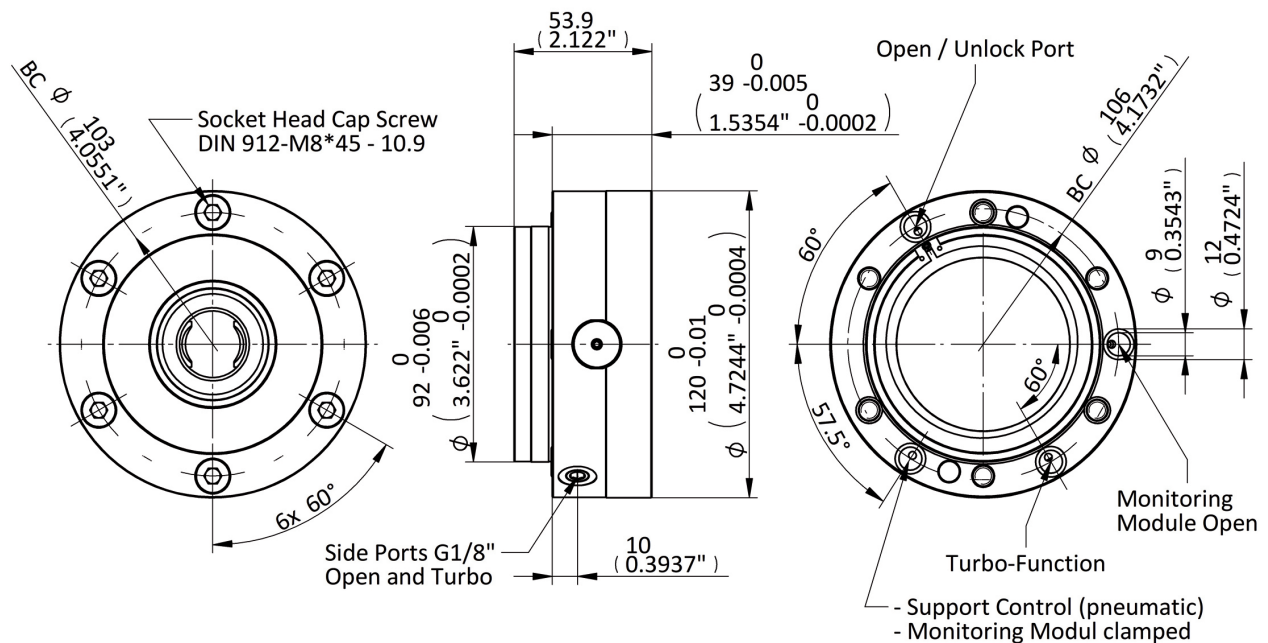


C 138LI,
cross section

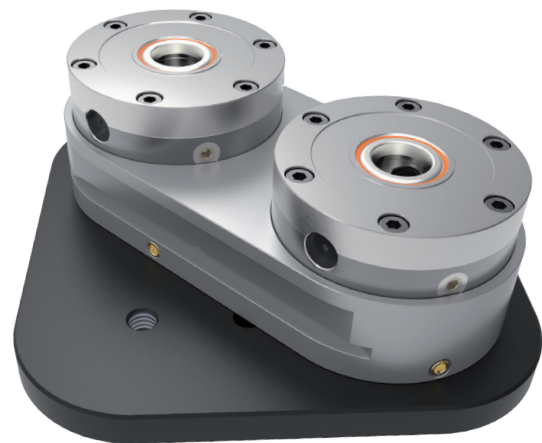
Zero Point Clamping Unit Z 120L

P/N 38127

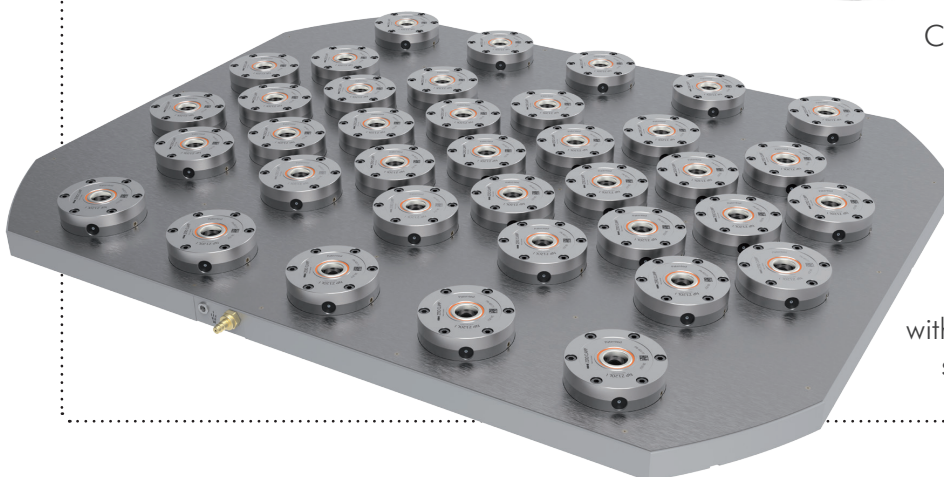
Dimensions Sheet



Z 120L
P/N 38127



Console for automated handling
of Xtric vices with Zero Point
clamping units Z 120L.

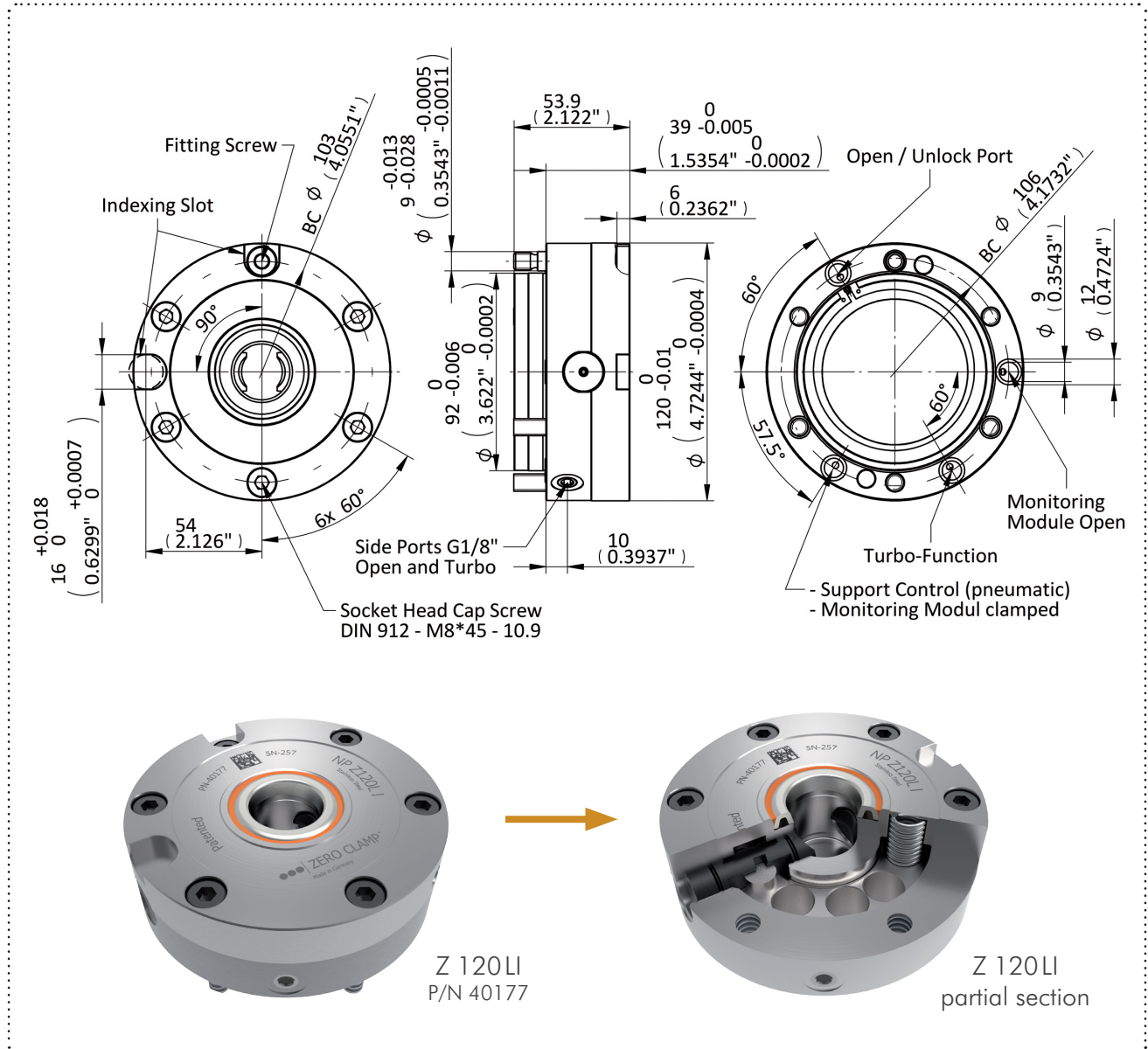


Customized base plate
with 37 clamping units Z 120,
spacing on 200 mm CC.

Zero Point Clamping Unit Z 120LI

P/N 40177

Dimensions Sheet





Technical Data

Zero Point Clamping Unit Models	C 138L compatible with competitors' modules	Z 138L System ZeroClamp®	Z 120
Pull-down-force kN	8 (1,800 lbs.)	8 (1,800 lbs.)	5 (1,125 lbs.)
Pull-down-force with turbo kN	25 (5,620 lbs.)	25 (5,620 lbs.)	20 (4,496 lbs.)
Holding force kN (M10/M12/M16)	35/50/70 (7,860/11,240/15,720 lbs.)	35/50/70 (7,860/11,240/15,720 lbs.)	35/50/- (7,860/11,240/- lbs.)
Unclamp pressure bar	6 (85 lbs.)	6 (85 lbs.)	6 (85 lbs.)
Repeat accuracy mm	< 0.0025 (0.0001")	< 0.0025 (0.0001")	< 0.0025 (0.0001")
Weight kg	3.7 (8 lbs.)	3.7 (8 lbs.)	3.0 (6.48 lbs.)
Max. stud retraction mm	1 (.040")	1 (.040")	0.5 (.020")
Radial compensation mm	0.1 (0.004")	0.1 (0.004")	0.1 (0.004")

Zero Point Clamping Unit Models

Typ	C 138L	C 138L I	Z 138L	Z 138L I	Z 120L	Z 120L I
P/N	34465	40005	34452	40179	38127	40177
Version	w/o indexing	with indexing	w/o indexing	with indexing	w/o indexing	with indexing

Accessories

	Clamping stud for C 138L	Clamping stud for Z 138L		
P/N	36155	20178	20298	19984
Size	25M16	18M12	18M16	25M16
Fitting	25k6	18k6	18k6	25k6
Thread	M16	M12	M16	M16

	Sealing stud for C 138L	Sealing stud for Z 138L
P/N	37884	19233



www.zeroclamp.com

ZeroClamp GmbH

Albert-Mayer-Straße 13
D-83052 Bruckmühl
Germany

Phone: +49 8062 72948-0

Fax: +49 8062 72948-199

Email: info@zeroclamp.com

www.zeroclamp.com